

US 190 Feasibility Study

Background of the Study

- The Killeen-Temple Metropolitan Planning Organization (KTMPPO) sent a letter dated June 22, 2016, requesting that the Texas Department of Transportation (TxDOT) “conduct a route study for possible alignments of US 190 as a principal arterial, controlled access facility meeting interstate standards east of I-35.”
- The overarching goal for this study carried out by TxDOT and KTMPPO was for the US 190 Feasibility Study to be community-driven. To that end, the project team established a working group to guide the study and provide input. Working group membership included elected officials, city/county representatives, other stakeholders (such as the Farm Bureau) and the public.



Working Group Participation

- The working group met four times throughout the course of the study and helped to develop the goals and objectives, route options, and evaluation criteria. They also provided recommendations at the conclusion of the study.



Study Goals and Objectives

Enhance east/west connectivity

- Improve access to Little River- Academy and Rogers
- Provide more reliable travel times
- Enhance access to schools, hospitals, and emergency services

Accommodate existing and projected traffic volumes

- Relieve existing congestion
- Accommodate traffic resulting from ongoing growth
- Plan for and mitigate future traffic congestion

Enhance safety

- Route large trucks away from populated areas
- Enhance access and reliability for first responders (EMS, firefighters, police)

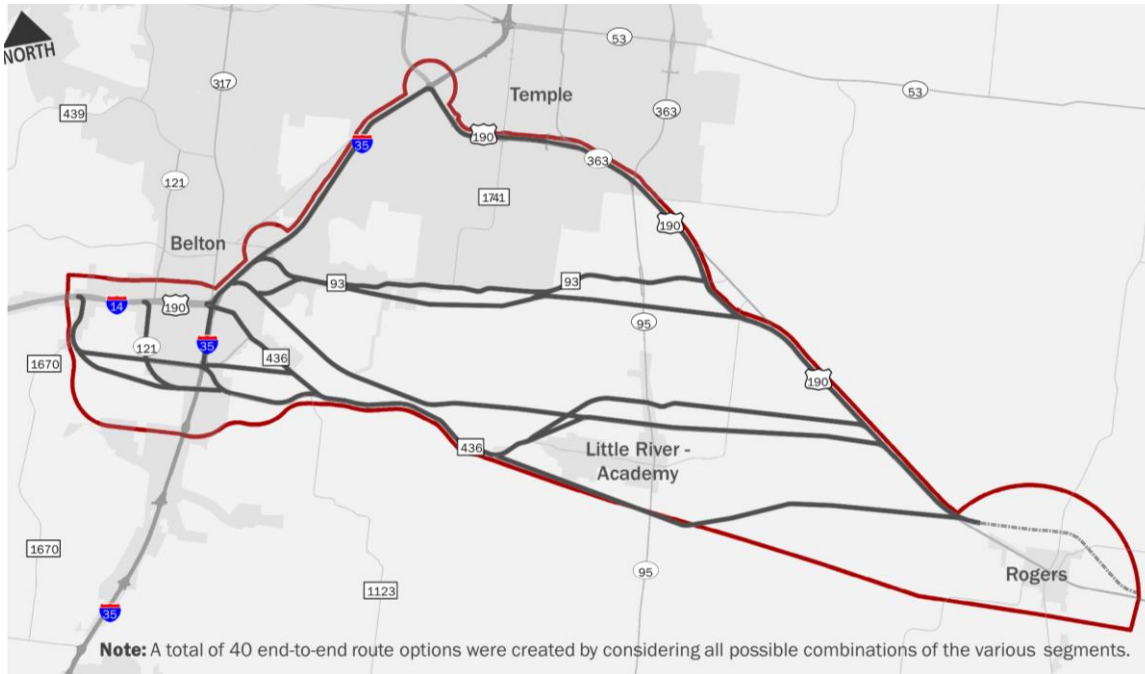
Support growth and economic development

- Positively impact businesses (especially small businesses)
- Promote economic development
- Minimize construction-phase impacts

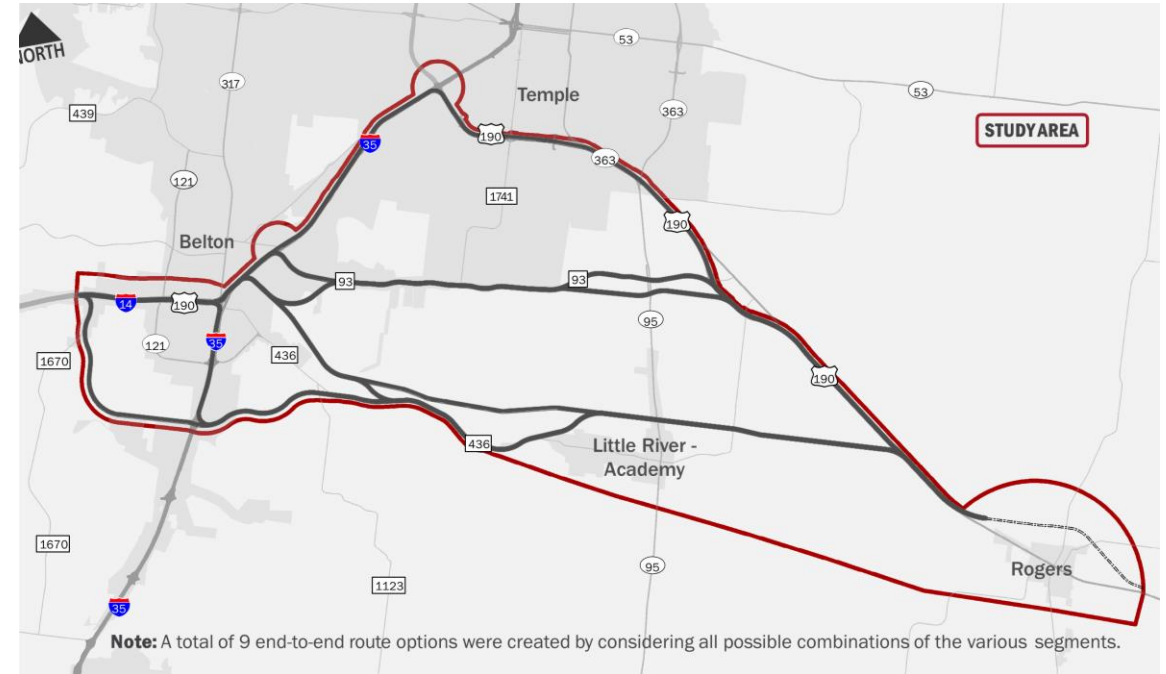
Provide cost-effective and environmentally-efficient options

- Minimize effects on private property

Route Options



Conceptual Route Options
Developed During Working Group Meeting 1



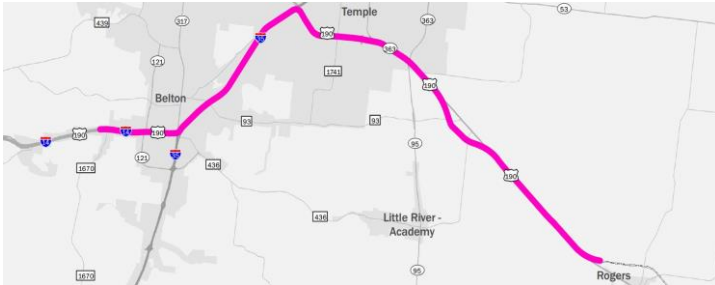
Preliminary Route Options
Developed During Working Group Meeting 2

Evaluation Criteria

- Routes were evaluated based on traffic data, projected travel times, environmental and community impacts, ability to promote economic development and cost, among other factors.

Primary Route Options

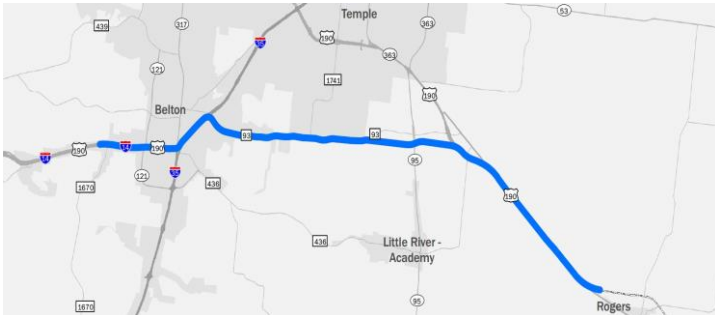
Developed During Working Group Meeting 3



Pink Route
Central Route Option



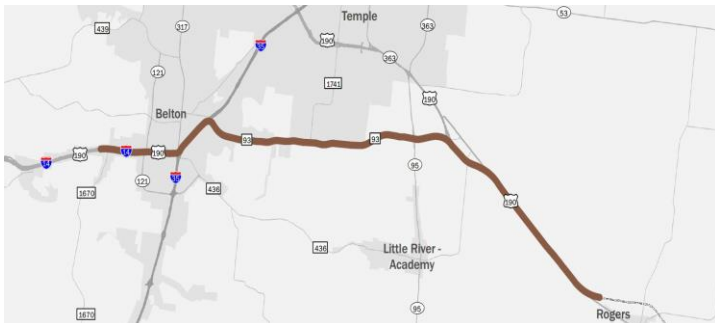
Black Route
Southern Route Option



Blue Route
Northern Route Option



Aqua Route
Southern Route Option



Brown Route
Northern Route Option

Public Open House

5:00 to 7:00 p.m.

November 30, 2017

Bell County Expo Center, 301 Loop 121

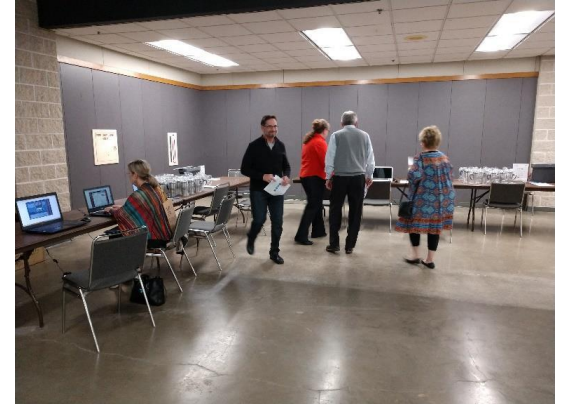
Belton, TX 76513

Highlights

Attendees – 207

Comment forms/emails – 75

MetroQuest Surveys – 428 filled out
(750 visits to website)



Study Findings

- The Pink Route is most supported/least opposed by the public.
- At this time, the general public does not see the need to relocate US 190.
- The Pink+2 Route option confirms regional planning efforts calling for the addition of a travel lane in each direction on I-35. With the additional lanes, I-35 traffic can be accommodated through the 2040 planning horizon.
- Future US 190 improvements are compatible with and complement the Rogers Relief Route.

If, in the future, it becomes necessary to relocate US 190, a fresh look at the primary route options is recommended to assess land use and environmental conditions at that time.

Working Group Recommendations

- Only the Pink+2 Route should be carried forward into future studies/phases of project development.
- Modify KTMP's 2040 Metropolitan Transportation Plan by adding other improvements as necessary to upgrade US 190 to interstate standards between I-35 and the Rogers Relief Route.

For More Information

- Visit the KTMPO website for a copy of the Feasibility Study Report:
<https://ktmpo.org/roadway/us-190-feasibility-study/>
- Contact KTMPO at (254) 770-2200 or ktmpo@ctcog.org if you have any questions regarding this study.