



[Jodi.Wheatley@txdot.gov](mailto:Jodi.Wheatley@txdot.gov)  
(o) (254) 867-2700 | (c) (254) 366-7673  
[My35.org](http://My35.org)



## ---TRAFFIC ALERT--- (Correction)

---

August 2, 2017

### Temple – I-35 to close four nights in a row this week for beam-setting

**Below are the details for 4 high-impact I-35 closures in Temple, August 2 – 5**, as the contractor sets bridge beams over the Lampasas Crossing of the BNSF Railroad. This includes a Saturday night closing. Please obey all traffic-warning devices, and be prepared for possible long delays. Travelers are encouraged to seek alternate routes during the closures.

#### **Wednesday, August 2, 2017, 7 pm – 7 am Southbound Closure Only**

- Southbound mainlanes close at Nugent Ave.
- Southbound traffic will detour to the frontage road at Exit 302 (Nugent Ave).
- Southbound traffic will re-enter I-35 at Bird Creek Shopping Center, before S. Loop 363

#### **Thursday, August 3, 2017, 7 pm – 7 am Both Directions Closed**

- Northbound mainlanes close at South Loop 363.
- Northbound traffic will detour to the frontage road at Exit 300 (Ave H).
- Northbound traffic will re-enter I-35 at Central Ave.
  
- Southbound mainlanes close at Nugent Ave.
- Southbound traffic will detour to the frontage road at Exit 302 (Nugent Ave).
- Southbound traffic will re-enter I-35 at Bird Creek Shopping Center, before S. Loop 363.

#### **Friday, August 4, 2017, 9 pm – 7 am Both Directions Closed**

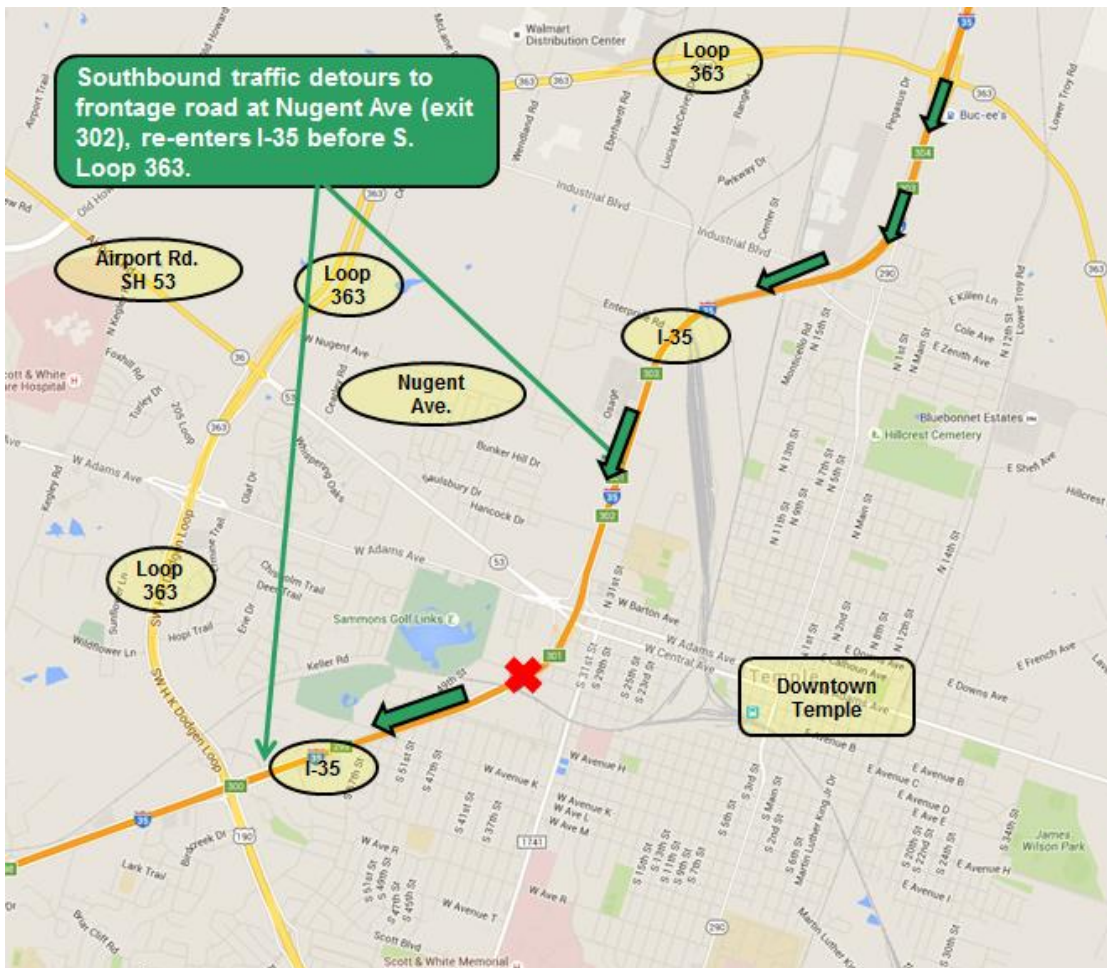
- Northbound mainlanes close at South Loop 363.
- Northbound Traffic will detour to the frontage road at Exit 300 (Ave H).
- Northbound traffic will re-enter I-35 at Central Ave.
  
- Southbound mainlanes close at Nugent Ave.
- Southbound traffic will detour to the frontage road at Exit 302 (Nugent Ave).
- Southbound traffic will re-enter I-35 at Bird Creek Shopping Center, before S. Loop 363.

**Saturday, Aug 5, 2017, 9 pm – 7 am Both Directions Closed**

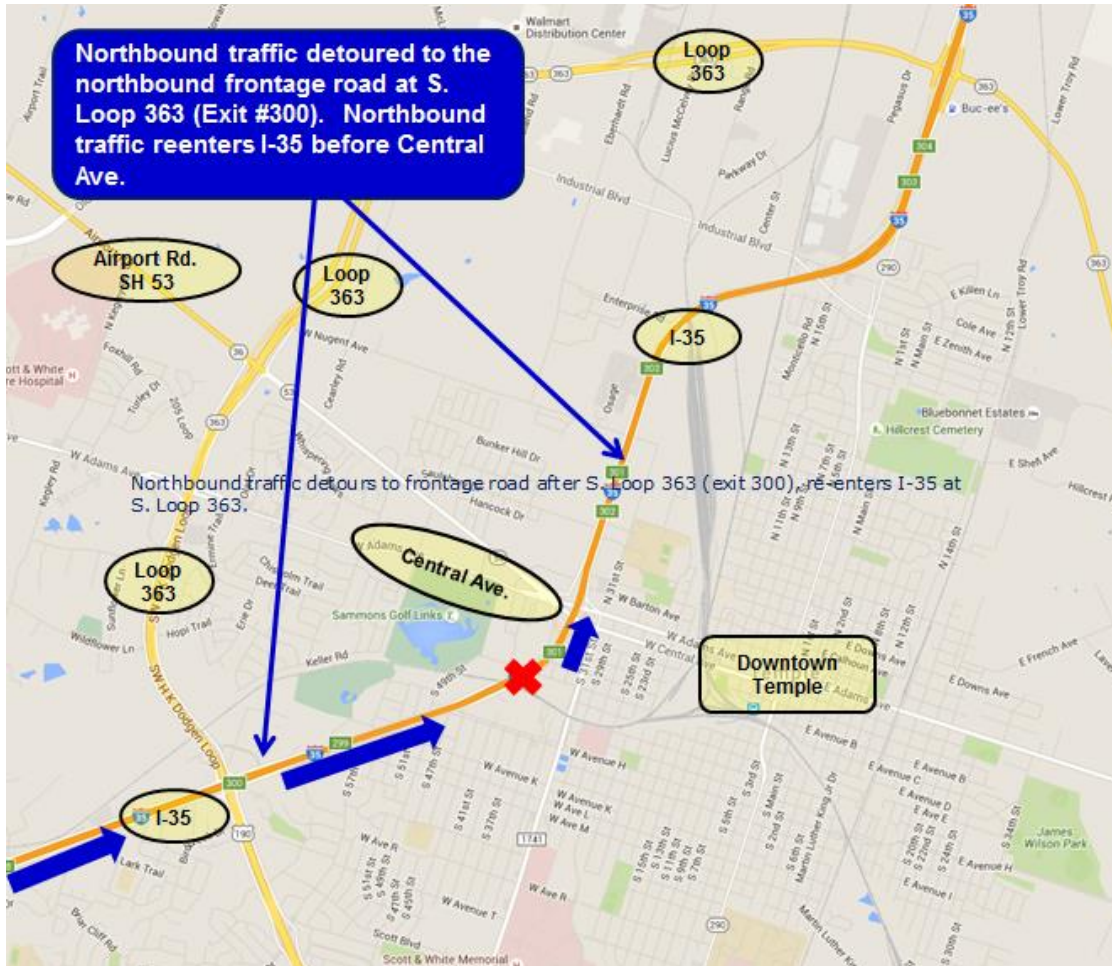
- Northbound mainlanes close at South Loop 363.
- Northbound Traffic will detour to the frontage road at Exit 300 (Ave H).
- Northbound traffic will re-enter I-35 at Central Ave.
- Southbound mainlanes close at Nugent Ave.
- Southbound traffic will detour to the frontage road at Exit 302 (Nugent Ave).
- Southbound traffic will re-enter I-35 at Bird Creek Shopping Center, before S. Loop 363.

**Please see maps on this page and the next for more details.**

**Southbound Closures (all 4 nights):**



## Northbound Closures (on 3 nights):



###

Road conditions and traffic updates available on [www.My35.org](http://www.My35.org), Facebook: [www.facebook.com/txdot](https://www.facebook.com/txdot)  
Twitter: [@I35Travel](https://twitter.com/I35Travel) and [@TxDOTWacoPIO](https://twitter.com/TxDOTWacoPIO)

For more information, contact Jodi Wheatley at (254) 867-2836 or Ken Roberts at (254) 867-2705

Efforts to improve the I-35 corridor throughout the state would not be possible without the support of local governments, the Texas Legislature and the U.S. Congress. In addition to the ongoing \$1.9 billion dollar expansion of I-35 through TxDOT's Waco District, a number of critical projects are underway in the Dallas/Fort Worth region to improve I-35 connections to I-820 and I-635 thanks to a partnership with the private sector. Meanwhile, TxDOT continues to plan for the long-term future of the I-35 corridor through the MY 35 citizen-driven planning process. For more information about I-35 expansion projects or the MY 35 planning effort, visit [www.my35.org](http://www.my35.org). Follow us on [Twitter.com/I35Travel](https://twitter.com/I35Travel).

Maintain a Safe System • Address Congestion • Best-in-Class State Agency • Connect Texas Communities

*An Equal Opportunity Employer*

[www.txdot.gov](http://www.txdot.gov) | [TxDOT on Facebook](https://www.facebook.com/txdot) | [TxDOT on Twitter](https://twitter.com/txdot)