



Central Texas *ON THE MOVE*

2180 N. Main Street Belton, TX 76513

Fall 2017

How Policy Drives Transportation Planning

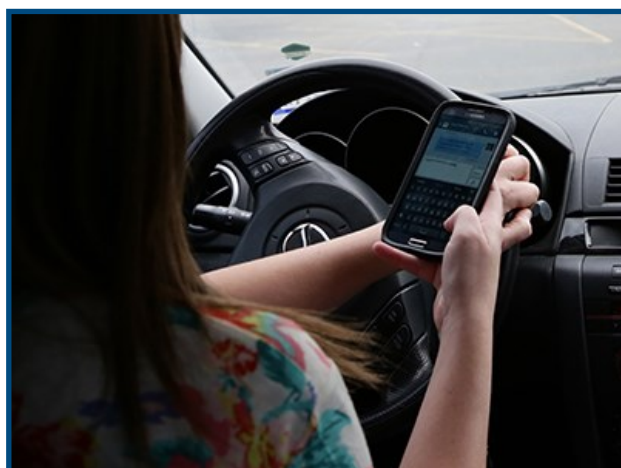
Transportation planning is a complicated process. There are many hurdles that an entity faces when trying to bring a project from concept to completion. Choices made at the state and national level can affect transportation planning in both a positive and negative way, which can affect the way you travel. The following legislative changes have recently occurred during state and national legislative sessions.

2018 Transportation, Housing and Urban Development Bill

On July 17, the House Appropriations Committee approved fiscal year 2018 Transportation, Housing and Urban Development (THUD). This measure would provide a total net appropriation for the United States Department of Transportation (USDOT) of \$77.5 billion. This amount is approximately \$1.7 billion above what the President requested, however, the \$77.5 billion is below what was appropriated for FY2017 by one billion dollars. THUD bill also fully funds the Fixing America's Surface Transportation (FAST) Act, a bill that was signed in 2015 that authorizes \$305 billion in 2016 through 2020 in various transportation infrastructure. Unfortunately, THUD does cut approximately \$800 million in contract authority and completely eliminates the Transportation Investment Generating Economic Recovery (TIGER) program.

The Senate Appropriations Committee approved their version of FY18 THUD bill on July 27. The THUD bill allows for a total of \$79.6 billion in spending by the USDOT, \$1.5 billion more than what was allowed to spend in 2017. The Senate's version of the THUD bill restores funding for the TIGER grant program and discretionary appropriations in the amount of \$155 million for Essential Air service subsidy grants. The Senate also funds Capital Investment Grant program for mass transit projects \$901 million above what the President has requested. Congress is not expected to pass any of the FY18 appropriation bills before the fiscal year begins on October 1.

Texas Passes Statewide Texting While Driving Ban



In 2016, more than 3,000 people were seriously injured and 455 fatalities in accidents caused by distracted driving. (Source: Texas Dept. of Transportation).

As of September 1, 2017, texting while driving in the State of Texas is now illegal due to the passage of House Bill 62. Texting while driving is now punishable with a \$99 fine for first time offenders and \$200 for repeated offenses. Safety advocates have been pressing for the State of Texas to pass a texting while driving ban for years even with lawmakers passing a ban in 2011. However, this bill was vetoed by then Texas Governor Rick Perry. Momentum for a texting while driving ban started back up this year after a deadly bus accident that was caused by someone who was texting and driving. This law also prohibits the use of hand-held devices to read, write or send an electronic message but does not prohibit using a hand held device for navigation or music. Instituting a texting while driving ban can help reduce accidents caused by distracted driving.



Contact Us

Contact us for more information about our services.

Killeen-Temple MPO

2180 N. Main Street
Belton, TX 76513
(254) 770-2200

ktmpo@ctcog.org

Visit us on the web at:

www.ktmpo.org



In This Issue

- Transportation Policies
- FY 18-20 KTMPO Funded Projects
- Advisory Committee Update
- US 190 Feasibility Study
- Air Quality Update
- Project Update
- Fitness Friendly Businesses

Autonomous Vehicles Gain Momentum with New Bill

In April, the Governor signed Senate Bill 2205 which allows companies to test drive their autonomous vehicles on state roads and highways without a driver behind the wheel. SB 2205 requires that all self-driving cars that are on the road are capable of complying with traffic laws, be equipped with video recording devices, be insured, and makes the manufacturer responsible for any traffic laws that are violated and for any accidents.

These vehicles may potentially decrease car accidents. According to the Texas Department of Transportation (TxDOT), in 2016, 1 person was killed every 2 hours and 20 minutes, 1 person was injured every 1 minute and 59 seconds and 1 reportable crash occurred every 57 seconds in the state of Texas. Autonomous vehicles have the capability to detect issues and take action to avoid crashes that can result in serious injuries and/or fatalities. Passing SB 2205 maybe one component of making travelling in Texas safe for all users.

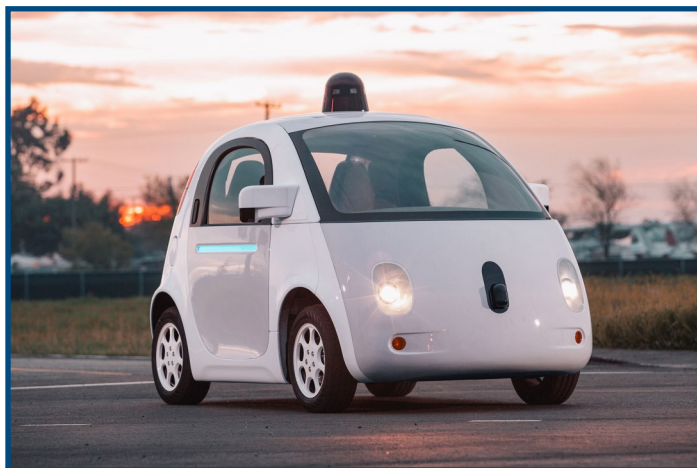
Texas Authorizes Legislation for TERP

The 85th Legislature also reformed and extended the Texas Emissions Reduction Program known as TERP. The TERP program consists of nine different grant programs that focus on clean air. Grant programs include the Alternative Fueling Facilities Program, Texas Clean Fleet Program, and the Texas Clean School Bus Program. TERP is the State of Texas' second largest air pollution reduction program and has become the most cost-effective way to reduce air pollution. Our region is considered "near non-attainment" for the ozone standard; any effort that reduces the risk of becoming "non-attainment" status for ground-level ozone is worthwhile for our citizens.

The TERP program can greatly benefit the Central Texas region and other parts of Texas. A majority of the ground-level ozone that is present in our region is transported here from the larger metropolitan areas, such as Austin and Dallas-Ft. Worth. If these metro areas are able to lower the amount of ground-level ozone in their region, less ground-level ozone could be transported into our region, improving our chances of remaining "in-attainment." For more information on TERP, visit <https://www.tceq.texas.gov/airquality/terp>.

House Bill 100 Reinstates Ridesharing Companies

In the past year, cities in Texas have passed local ordinances barring ride sharing companies like Uber and Lyft to conduct business in those cities. HB 100 was signed to provide a statewide regulatory framework for ridesharing companies. These regulations require ridesharing companies to have a permit and pay an annual fee of \$5,000 to operate in the state and requires drivers to have local, state and national criminal background checks.

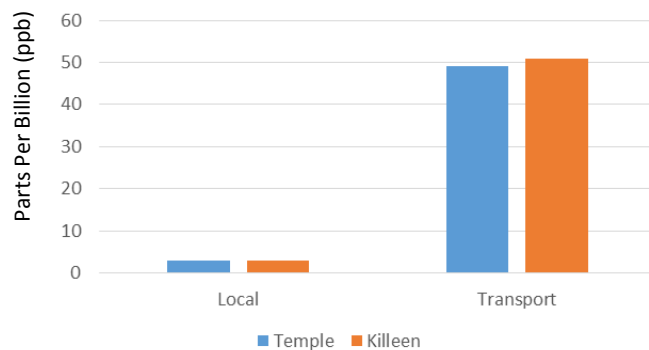


The car pictured above is Google's self-driving car prototype. The car does not have a gas pedal, brake pedal or steering wheel.

2014—2016 Statewide Crash Statistics

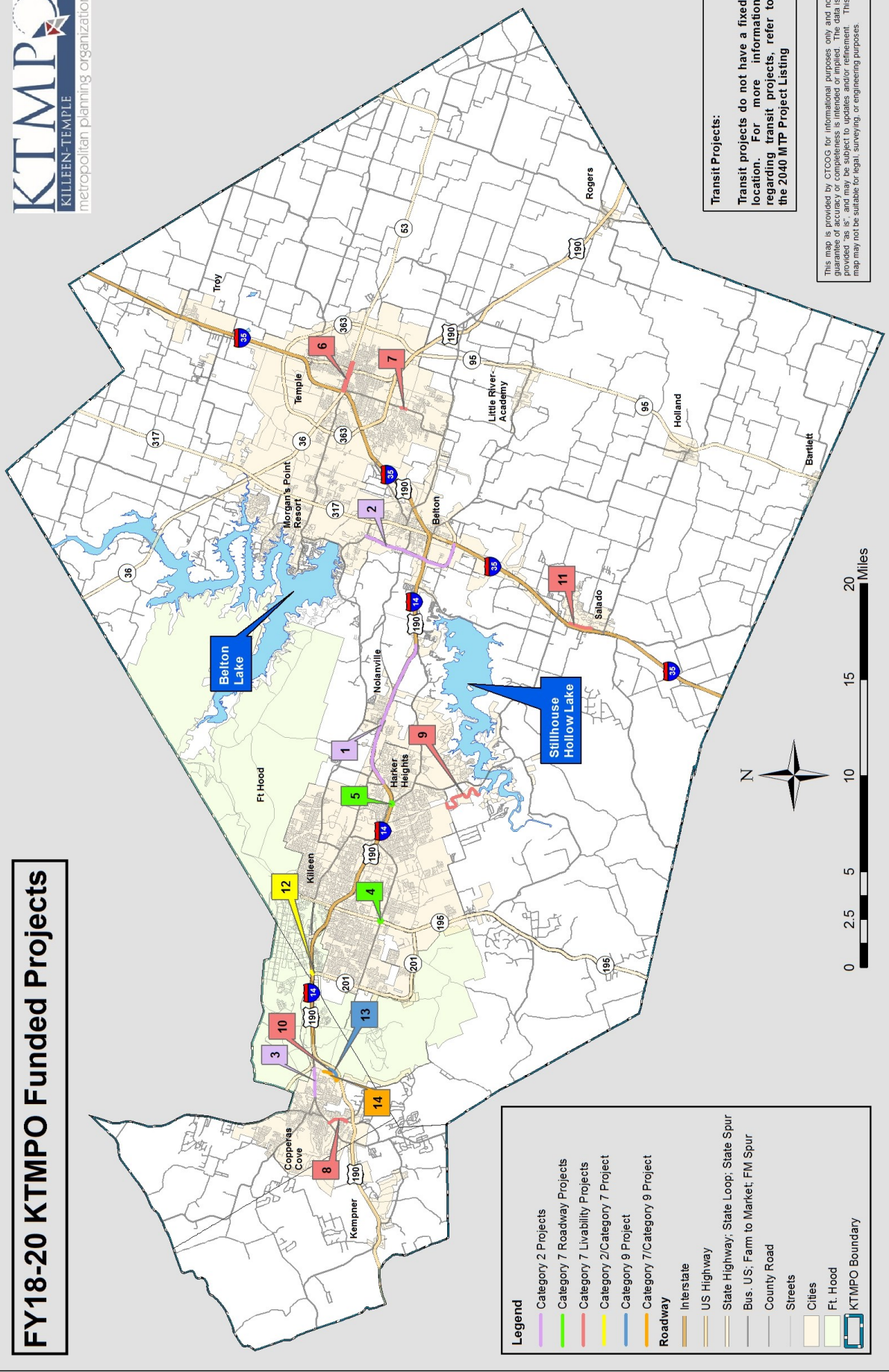
Reported Crash Statistics	2014	2015	2016
Total Number of Accidents	477,550	521,389	551,971
Number of People Injured	238,161	247,652	256,076
Number of People Sustaining a Serious Injury	17,133	17,097	17,582
Number of Motorcyclist Killed	467	464	496
Number of Cyclists Killed	50	52	65
Number of Pedestrian Killed	488	558	678
Total Number of Fatalities	3,536	3,578	3,773

Episode Average Contribution to Daily Max 8-Hour Ozone



October 2017 is Walk to School Month and October 4, 2017 is Walk to School Day. Please only walk on safe routes. Provide input on pedestrian issues by visiting our bike/pedestrian web map at ktmpe.org.

FY18-20 KTMPo Funded Projects



Legend

- Category 2 Projects
- Category 7 Roadway Projects
- Category 7 Livability Projects
- Category 2/Category 7 Project
- Category 9 Project
- Category 7/Category 9 Project

Roadway

- Interstate
- US Highway
- State Highway; State Loop; State Spur
- Bus. US; Farm to Market; FM Spur
- County Road
- Streets
- Cities
- Ft. Hood
- KTMPo Boundary

Transit Projects:
 Transit projects do not have a fixed location. For more information regarding transit projects, refer to the 2040 MTP Project Listing

This map is provided by CTGOG for informational purposes only and no guarantee of accuracy or completeness is intended or implied. The data is provided "as is" and may be subject to updates and/or refinement. This map may not be suitable for legal, surveying, or engineering purposes.

FY18-FY20 KTMPO Funded Projects					
MPO CATEGORY 2 PROJECTS					
Reference Number	KTMPO ID	Project Name	Full Extents	Description	Estimated Cost
1	W40-06 ¹	US 190	FM 3423 (Indian Trail) to FM 2410 in W Belton	Widen main lanes from 4 to 6 lane divided freeway and ramp alignments	\$39,000,000
2	W40-04a ¹	Loop 121 Phase 1	FM 439 to IH 35	Widen from 2 to 4 lane divided roadway with bike/ped improvements	\$27,000,000
3	C30-03b	Business US 190 Phase I	Ave D to Constitution Dr	Change the center turn to a raised center turn and convert one travel lane in each direction to 6' sidewalk, 5' bicycle lane and 1.5' curb and gutter	\$10,000,000
MPO CATEGORY 7 ROADWAY PROJECTS					
4	K40-27 ¹	SH 195	At FM 3470	Construct turn-arounds	\$800,000
5	H35-01	US 190 at FM 2410	East Central TX Expy W to East Central TX Expy East	Phase 2, West to East Connector- Turnaround	\$5,000,000
MPO CATEGORY 7 LIVABILITY PROJECTS					
6	T40-12	31st St Sidewalks (FM1741)	Marlandwood Rd to Canyon Creek Rd	Construct 6 ft wide sidewalks on both sides	\$500,000
7	T40-15	Adams Ave/Central Ave. Bicycle/Pedestrian Improvements	IH 35 to MLK Jr Blvd	Construct sidewalk and bike path along Central and Adams Ave	\$1,913,044
8	C40-05	FM 116 & 3046 Sidewalks	Business 190 to South Park on FM 3046	Construct ADA compliant sidewalks, curb ramps, crosswalks, and bike lanes	\$975,000
9	K40-21b	Heritage Oaks Hike and Bike Trail, Segment 5	Chaparral Rd to USACE Property	Construct shared use path for pedestrian and bicyclists	\$1,300,000
10	C40-04c	The Narrows (Charles Tillman Way)	Constitution Dr to RGIII Dr	Construct sidewalk	\$170,000
11	S40-04a ¹	Main St Sidewalks Phase 1	Salado Plaza Dr to College Hill Dr	Main St. improvements to include lighting, sidewalks, & striping for bicycles	\$1,616,956
MPO CATEGORY 7 TRANSIT PROJECTS					
N/A	A40-15	Fleet Replacement Project	Killeen UZA	Purchase of three fixed route buses to replace Killeen fixed route buses	\$1,285,000
MPO COMBINED CATEGORY 2 AND CATEGORY 7 PROJECTS					
12	W40-03 ¹	US 190 Turnaround	At SH 201 (Clear Creek Rd)	Roadway reconfiguration to improve turning movements	\$4,000,000
MPO CATEGORY 9 PROJECTS					
13	C40-04b	The Narrows (RG III at Old Copperas Cove Rd)	Loop on Old Copperas Cove Rd to RGIII ending at Constitution Dr	Construct sidewalk	\$680,000
MPO COMBINED CATEGORY 7 AND CATEGORY 9 PROJECTS					
14	C40-04a	The Narrows (Constitution Drive)	Bowen Ave to S of MLK	Construct sidewalk	\$850,000
Legend					
	Category 2 Projects				
	Category 7 Roadway Projects				
	Category 7 Livability Projects				
	Category 7 Transit Projects				
	Combined Category 2 and Category 7 Projects				
	Category 9 Projects				
	Combined Category 7 and Category 9 Projects				

In May, the Transportation Planning Policy Board approved 15 projects for funding for fiscal years 2018 to 2020. An estimated \$73 million will fund 6 roadway, 8 bike/pedestrian and one transit project.

Strategically Planning for Future Growth



The Preferred Future Growth Plan focuses on preserving Nolanville's small town feel and natural landscape while building a thriving city.

Interstate 14 Expansion

Nolanville is expecting increased interest in the development of commercial property on I-14 as a result of the 6 lane expansion. In response, the Economic Development Corporation (EDC) hired the Mike Barnes Group to assist in recruiting desired industries.

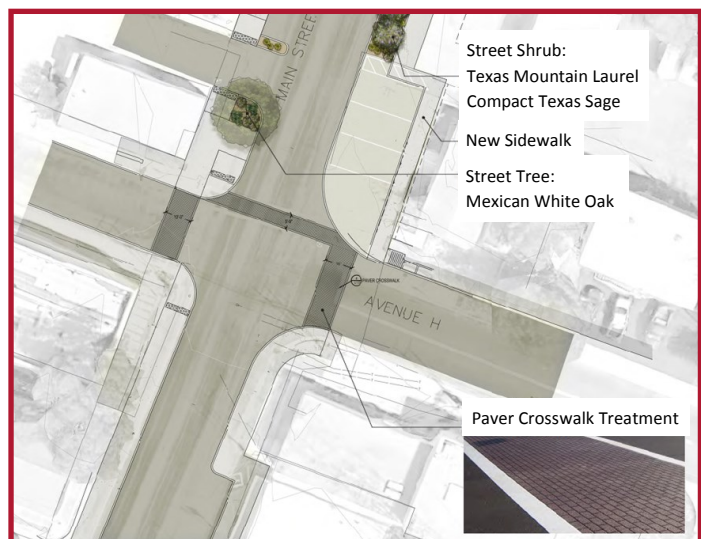


Main Street Connectivity Project

The City of Nolanville received \$455,309 with a 20% City match through KTMPO's Category 7 funds to provide much anticipated bicycle and pedestrian improvements to Main Street. Nolanville's strategic partnerships with the Nolanville Economic Development Corporation, who provided the necessary match, and with the HOP & Burlington Northern Santa Fe (BNSF) Railroad has made the Main Street Connectivity project a reality.

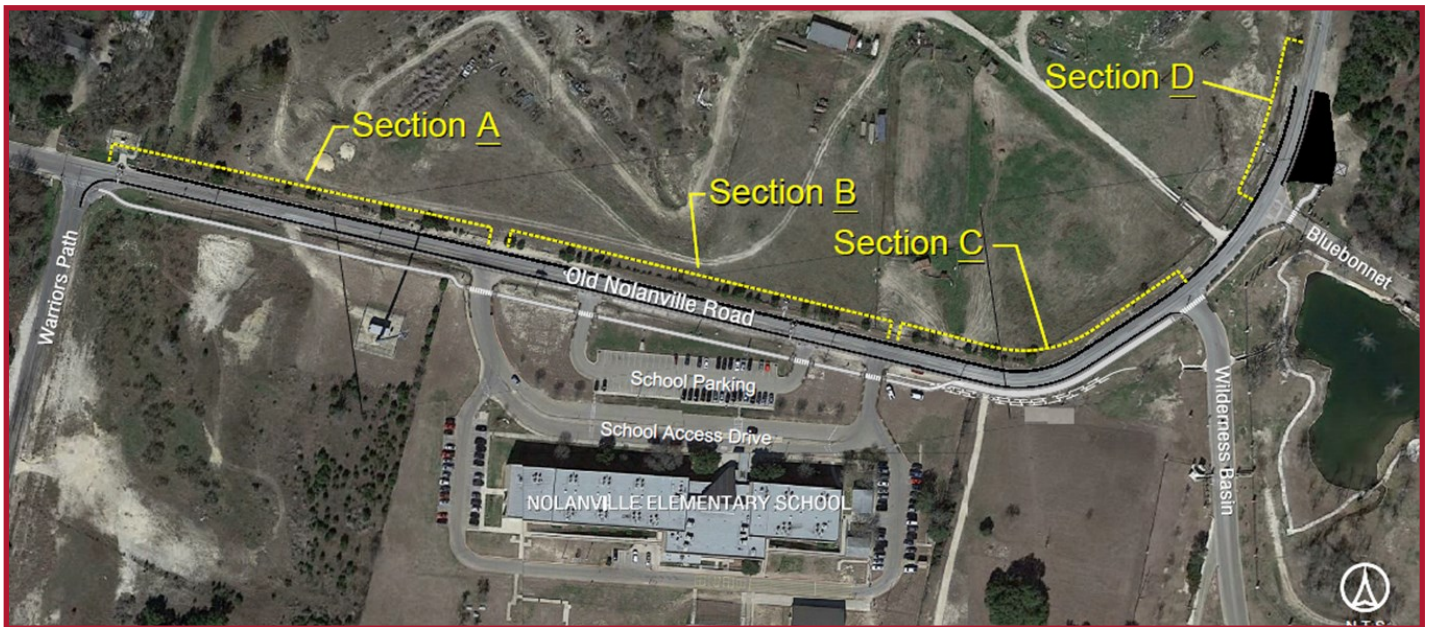
Elements of the project include:

- ADA-compliant multiuse pathways on both sides of Main Street.
- Pathways to HOP shelter sites on the access roads.
- Street lighting & landscaping.
- Park & Ride Designated Area with Bike Racks.



Safe Routes to School — Old Nolanville Road

Old Nolanville Road received funding through a TxDOT Safe Routes to School grant for \$481,270 with a 20% City Match funded by the Street Maintenance Tax. The project stabilizes deteriorated roadway edges and expands the width with ribbon curb. Sidewalks adjacent to Nolanville Elementary School and the bus stop will be rehabilitated and widened. Old Nolanville Road will also be covered by a 4" overlay funded through the Street Maintenance Tax.



Keep It Clean!

The drive on Old Nolanville Road and throughout the City are adorned with beautiful tree canopies. Adding trees and landscaping to the business section is an important part of our planned improvements.

The City protects its streetscapes through Keep Nolanville Beautiful (KNB) clean ups and anti-litter campaigns. Last year, the City of Nolanville received a Scenic City designation.

Nolanville is the perfect start point for endurance training. Citizens enjoy daily foot traffic from out-of-towners that enjoy our access to frequently used routes.



In coordination with the City, CEFCO installed a bike repair station and bike racks for users, providing services for cyclists and promoting active lifestyles for area families.



BPAC Update

For the past year, the Bicycle/Pedestrian Advisory Committee (BPAC) has been busy identifying corridors that currently lack bicycle and/or pedestrian facilities. Through BPAC and public input, 34 routes have been identified. BPAC conducted a project tour to evaluate these routes and will be considering developing them into possible projects.



The City of Temple extended the Pepper Creek Trail north. The new trail provides a connection from SH 36 to McLane Pkwy. The trail extension is 4 miles.

FAC Update

KTMPO has developed a Freight Advisory Committee to address our region's needs and issues in freight transportation. KTMPO has held two meetings and received input from the freight community where companies are facing issues moving goods. The FAST Act has dedicated funding for freight projects, therefore it essential to identify areas for improvement.



US 190 Feasibility Study Update

KTMPO, with support from TxDOT, is conducting a feasibility study to explore options for upgrading and possibly relocating US 190 east of I-35. An open house will be held during the Fall to encourage additional input from the community. For more information about the US 190 Feasibility Study, please visit <http://www.ktmipo.org/roadway/us-190-feasibility-study/>.

Preparing for High Ozone Days

Ground-level ozone is a big concern of KTMPO during the summer months which are typically hot and dry. Ground-level ozone forms when Nitrous Oxides (NOx) and Volatile Organic Compounds (VOC) react in the presence of heat and sunlight. In Central Texas, ozone season typically starts in April and ends in October. Help KTMPO keep the air clean during the ozone season by following these tips.

Monthly Maximum 8-hr Ozone Readings for 2017 (Parts per billion)

Month	Killeen	Temple
January	51	53
February	62	61
March	59	58
April	71	69
May	69	75
June	72	67
July	61	64
August	70	66

Clean Air Tips:

- Walk, ride your bike, use public transit or carpool to reduce emissions.
- Combine errands into one single trip.
- Refuel your car in the evening when the day is cooling off.
- Avoid idling as much as possible.

Please visit www.ctair.org for more information.

Our Design Value must not exceed 70 parts per billion to stay in compliance with the National Ambient Air Quality Standard (NAAQS) for ozone.

2014-2016 Design Value

Station	Parts Per Billion
Killeen	67
Temple	67

2015-2017 Design Value as of September 5, 2017

Station	Parts Per Billion
Killeen	67
Temple	68

Remember...Ozone is Good Up High, Bad Nearby!!!

FM 2410 Construction Project



FM 2410 in Harker Heights: This project will widen FM 2410 from two to four lanes from Roy Reynolds Dr to US 190 with sidewalks, median and turn lanes in a context sensitive design.



Interstate 35 Construction Update

Estimated Completion Dates:

Troy: Spring 2018

Temple: Spring 2019

For more information please visit www.my35.org.

Check out our Fitness Friendly Business!

Barrow Brewing Company—Salado

Salado Glassworks—Salado

Springhouse!—Salado

Strawberry Patch—Salado

Lonestar eBikes—Salado

Visit www.ktmpo.org to find out services each business provides for cyclist and pedestrians.

A business is considered Fitness Friendly if it offers amenities that promote an active lifestyle like walking and biking.

For more information, please visit www.ktmpo.org.

Have you Checked These Out?



How You Can Get Involved

KTMPO MEETINGS: The public is encouraged to attend various KTMPO meetings including the Technical Advisory Committee (TAC) and Transportation Planning Policy Board (TPPB). The public is given an opportunity to speak at these meetings and have their voices heard. Please visit <http://www.ktmpo.org/meetings/> for meeting dates.

ADVISORY COMMITTEES: We currently have a Bicycle/Pedestrian Advisory Committee and a Freight Advisory Committee. If you wish to attend these meetings or serve on one of these committees, contact KTMPO staff for more details.

PUBLIC HEARINGS: Public hearings are held to receive comments on changes to KTMPO documents to include the Metropolitan Transportation Plan (MTP) and Transportation Improvement Program (TIP). Members of the public are encouraged to fill out a public comment form during public involvement periods. A general contact/comment form is also available at <http://www.ktmpo.org/contact/>.

KTMPO VOTING REPS: To contact your TAC and TPPB voting representatives please visit <http://www.ktmpo.org/about/members/>

CITY STAFF: KTMPO recommends that you contact the planning office in your city to identify areas that need improvement. City planners can then use the public input to design transportation projects that may move forward when funding becomes available.

Meeting Dates:

Technical Advisory Committee (TAC):

- First Wednesday of every month

Transportation Planning Policy Board (TPPB):

- Third Wednesday of every month

For all KTMPO meeting dates, please visit:

<http://www.ktmpo.org/meetings/>

KTMPO Staff:

Cheryl Maxwell: Director

Kendra Coufal: Senior Regional Planner

Jason Deckman: Regional Planner/GIS Technician

John Weber: Regional Planner

Check out our Bicycle/Pedestrian Web Map!

This map allows users to identify and recommend bike and pedestrian infrastructure. Visit www.ktmpo.org/mapsanddata to make your edits.

Hyperloop: May be coming to Central Texas! Visit www.hyperloop-tx.com.