



U.S. Department of Transportation  
**Federal Highway Administration**

# **Fostering Livability Through Accessibility, Safety and Multimodal Transportation**

**Wesley Blount**  
**Office of Human Environment**  
**Federal Highway Administration**



# U.S. DOT Priorities:



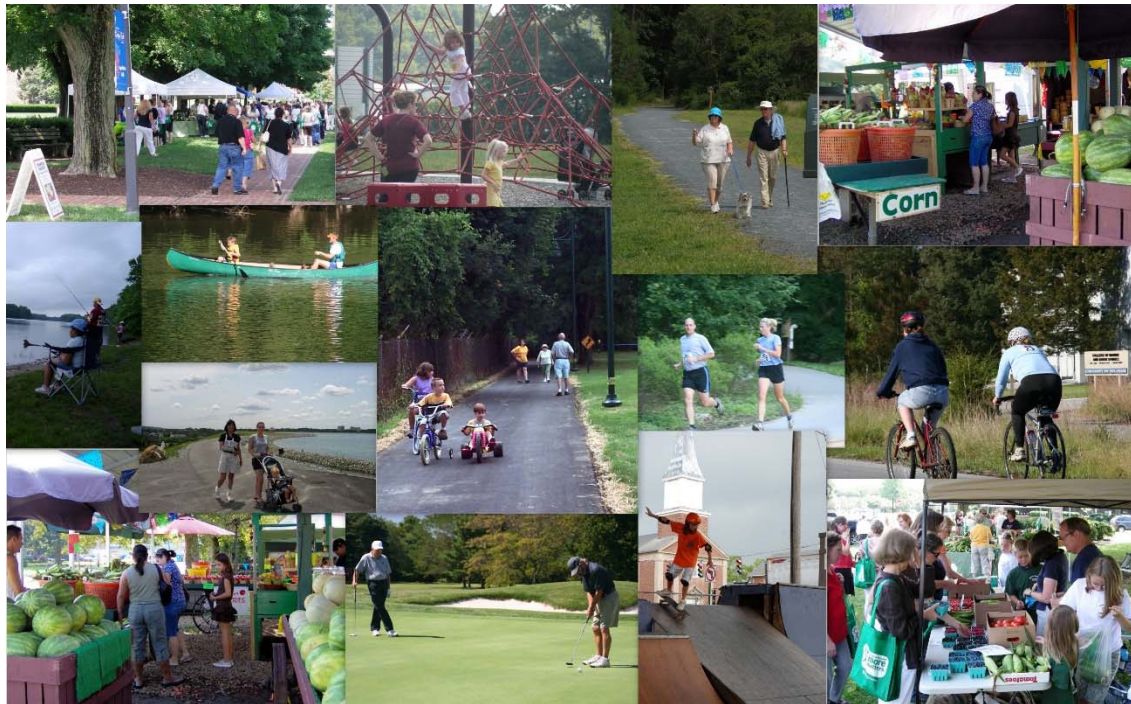
- Safety
- Infrastructure – Accelerated Project Delivery
- Innovation
- Accountability – Performance Measures

***Livability*** can help:

- Enhance safety for all users
- Gain project support to accelerate project delivery
- Support community multimodal connectivity by providing more transportation choices.

# Livability

- *Livability* is about using the quality, location, and type of transportation facilities and services available to help achieve broader community goals such as access to good jobs and safe streets.



# Transportation and Livability

- Better integration of multimodal transportation infrastructure and facilities
- Expand opportunities for economic development
- Provide safe and adequate accommodations for all users
- Increase community connectivity and cohesion
- Capitalize on the value of existing (context sensitive) community amenities
- Enhance access to jobs, schools, and other services
- Help improve overall quality of life



# Multimodal Transportation

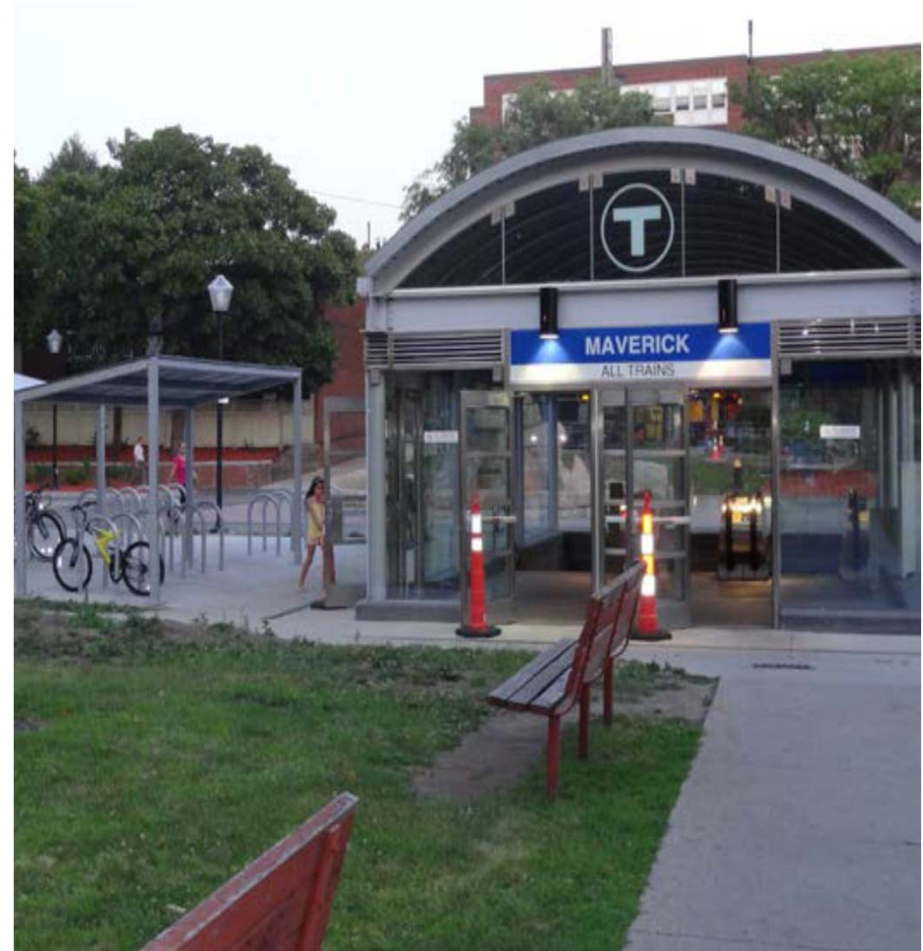
- ***Multimodal Transportation*** is: Choices of transportation methods (walking, cycling, automobile, public transit, etc.) that connects to other modes within the transportation system to get to one's destination.





# Multimodal Transportation: A Federal Perspective

- Build Partnership with stakeholders.
- Promotes access for people with disabilities, the elderly, and children.
- Improves connectivity between transportation options.
- Demonstrates strong partnership for increasing multimodal transportation opportunities.



# Urban/Rural Needs





# FHWA Program Areas

- Context Sensitive Solutions
- Environmental Justice
- Quality of Life/Livability
- Multimodal System Planning
- Connectivity
- Economic Development
- Sustainability and Resilience
- Transportation Planning and Health





# CSS Overview

- Flexible and creative transportation solutions
- Collaboration and consensus based decision making
- Internal and external stakeholder involvement
- Preserving and enhancing resources
- Physical setting (contextually appropriate design)
- Performance measures - timely project delivery



# Environmental Justice

## Overview

Environmental Justice (EJ) at the FHWA means identifying and addressing disproportionately high and adverse effects of the agency's programs, policies, and activities on minority populations and low-income populations

## Core Principles

Ensure communities have a meaningful voice in the transportation decision-making process.

Ensure that impacts to communities and citizens are recognized early and addressed throughout the transportation decision-making process.

Identify and prevent discriminatory effects through active administration of programs, policies, and activities.

Prevent the denial of, reduction in, or significant delay in receipt of benefits by minority populations and low-income populations.

The logo consists of two interlocking circles, one dark blue and one light blue, forming a stylized 'C' shape.

# Community Connections

- Community Connections is about using transportation innovations, partnerships, and technologies to bring communities together and to connect people to services and opportunities.
- Under the Every Day Counts program (EDC-4), FHWA is supporting urban, suburban, and rural communities that have been divided by past transportation investments and are currently experiencing gaps in existing transportation infrastructure and services.

## ***What to expect in 2018:***

- Peer learning through FHWA's Transportation Planning Capacity Building Program
- Community Connections handbook and case studies
- New Community Connections website
- Informational webinar series

# Transportation Planning and Health

- Framework for Better Integrating Health into Transportation Corridor Planning
- Transportation and Health Tool (THT)





# Transportation and Livability Resources

## Foundational

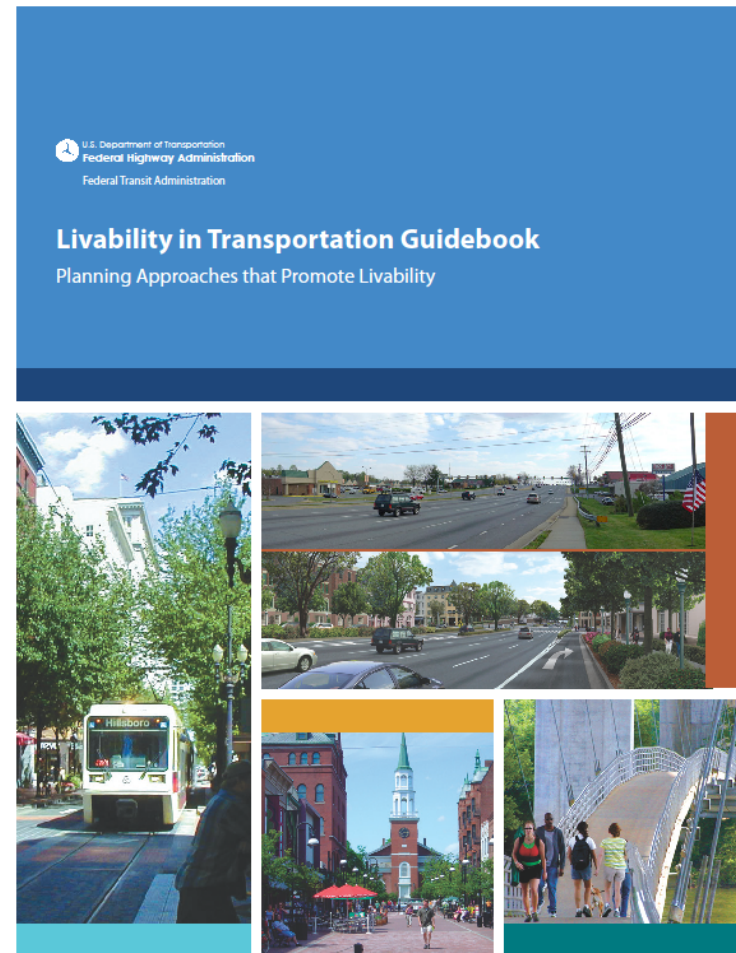
- Livability in Transportation Guidebook
- The Role of FHWA Programs in Livability
- Creating Livable Communities Report
- Regional Livability Workshop Summaries

## Recent

- The Why and How of Measuring Access to Opportunity, A Guide to Performance Management
- Updated Case Studies
- Best Practice Videos

## Work in Progress

- Community Impact Assessment Guidebook Update
- Community Connections, EDC-4
- Top Strategies for Accelerating Infrastructure Delivery Handbook.



# Economic Development Resources

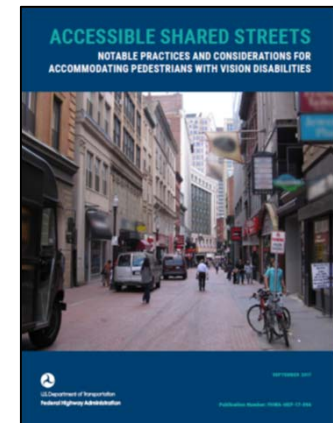
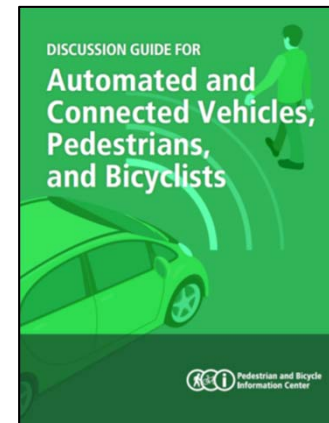
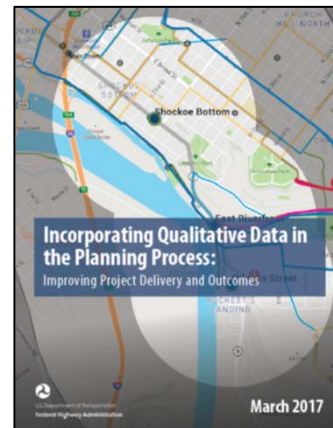
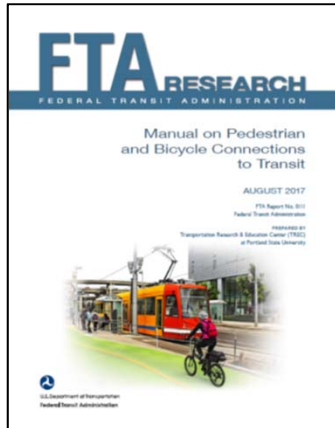
- FHWA Economic Development Case Studies
- FHWA Transportation and Economic Development Portal
- *Supporting Economic Development with Highway Investment Report* (Nov 2015)
- EconWorks (Economic Impacts Analysis), Webinar Series
- The Conservation Leadership Network Courses

(<http://www.conservationfund.org/what-we-do/conservation-leadership-network/upcoming-courses>)

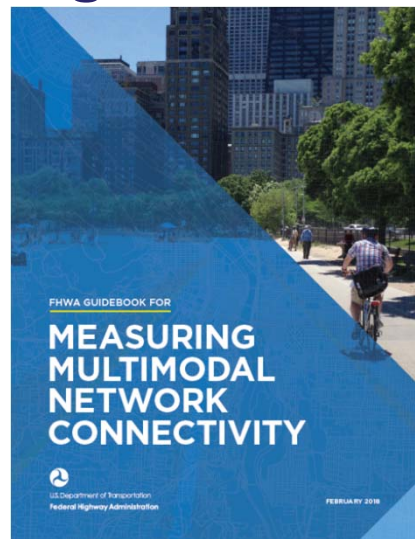


"Transportation should play a significant role in promoting economic growth, improving the environment, and sustaining quality of life." Declaration of Policy, 23 USC 101

# Ped/Bike Resources Recently Released



## \*\*\*\*Upcoming Ped/Bike Resource\*\*\*\*



# Human Environment Newsletters

## Human Environment Digest

December 14, 2017

PDF files can be viewed with the [Acrobat® Reader®](#).

Welcome to the Federal Highway Administration (FHWA) Office of Human Environment biweekly email digest. This digest shares the latest information from a range of Federal and non-Federal sources, addressing transportation and its relationship to the human environment. Through this information exchange, FHWA hopes to foster dialogue at all levels and continue to further the state of the practice on these important topics in support of safety; infrastructure, including accelerated project delivery, access to jobs, and community revitalization; technology and design innovation; and accountability, including, data-driven decisions and performance-based planning.

For more information on any of these topics, see the FHWA Related Links on the sidebar.

\*The information provided in this mailing does not necessarily reflect the view of the Federal Highway Administration or the U.S. Department of Transportation.



### Safety

#### The Next Generation of North American Bike Facilities

The National Association of City Transportation Officials (NACTO) released a new guidance, titled "[Designing for All Ages & Abilities: Contextual Guidance for High-Comfort Bicycle Facilities](#)." The guidance focuses on two key safety factors, vehicle speeds and traffic volumes, to give cities the tools they need to decide what street treatments will most improve bicycle safety.



### Infrastructure

#### California's Approach to Balancing Infrastructure and Stewardship

The Federal Highway Administration's (FHWA's) [Successes in Stewardship](#) newsletter highlights environmental streamlining and stewardship practices from across the country. The November 2017 edition of the newsletter is titled, "[California's North Coast Corridor Program Balances Infrastructure Demands and Environmental Stewardship](#)." The California

For more information about events and webinars, see the [HEP Calendar](#).

### Events

- January 23-24, 2018: NCSE's 18<sup>th</sup> National Conference and Global Forum on Science, Policy, and the Environment: The Science, Business, and Education of Sustainable Infrastructure: Building Resilience in a Changing World
- March 8-9, 2018: Traditional Cultural Places (Classroom). San Francisco, CA.

### Webinars

- December 14, 2:00 PM - 3:00 PM ET: Safety Performance Measures for Pedestrians and Bicyclists
- December 19, 1:00 PM - 2:00 PM ET: TREC's Bike-Ped Portal: National Bicycle and Pedestrian Count Archive
- December 20, 1:00 PM - 2:30 PM ET: Talking Freight's Good Practices in MPO Freight Planning
- January 9, 2018, 1:00 PM - 2:00 PM ET: ostering Community Partnerships to Advance Health Equity
- January 24, 11:00 AM - 12:00 PM ET: PeopleForBikes' eMTBs: Current Issues and Partnership Opportunities

### FHWA Related Links

- Environment Homepage
- Bicycle/ Pedestrian
- Environmental Justice
- Transportation Alternatives
- Recreational Trails Program.

To submit comments or information for inclusion in the next HE Digest, click [here](#). Submissions must be made before 12 PM EST Wednesday.

U.S. Department of Transportation  
Federal Highway Administration

FHWA's Fostering Multimodal Connectivity Newsletter

### In This Issue

Introduction.....	1
Providing Multimodal Transportation Options on Austin's Mopac Mobility Bridges.....	1
Downtown Fort Lauderdale Mobility Hub Streetscape Project to Provide Connections.....	3
Kentucky SHIFTS Ahead.....	5
Electric Vehicle Carshare Program Increasing Mobility for Disadvantaged Communities in Los Angeles.....	6
Announcements/New Resources.....	8

Editor's Note: With the New Year and the release of the U.S. Department of Transportation Strategic Plan for Fiscal Years 2018- 2022, we are introducing some formatting changes to this publication to highlight the development and implementation of multimodal transportation projects.

### Introduction

The Federal Highway Administration's (FHWA's) Fostering Multimodal Connectivity Newsletter is intended to provide transportation professionals with real-world examples of ways that multimodal transportation investments promote economic revitalization, provide access to jobs, and achieve safer communities through support of accelerated project delivery, technology and design innovation, and public/private partnerships. This newsletter communicates FHWA and partner efforts in support of the U.S. DOT Strategic Plan by improving connectivity, accessibility, safety, and convenience for all users.

Want to access additional tools and resources? Please visit FHWA's [website](#). Past issues of the newsletter are also [available](#). To subscribe to the newsletter, visit [GovDelivery](#).

[http://www.fhwa.dot.gov/livability/he\\_digest](http://www.fhwa.dot.gov/livability/he_digest)  
<https://www.fhwa.dot.gov/livability/newsletter/>





# Program Websites

- Livability:  
<http://www.fhwa.dot.gov/livability>
- Environmental Justice:  
[http://www.fhwa.dot.gov/environment/environmental\\_justice](http://www.fhwa.dot.gov/environment/environmental_justice)
- Bicycle and Pedestrian:  
[http://www.fhwa.dot.gov/environment/bicycle\\_pedestrian/index.cfm](http://www.fhwa.dot.gov/environment/bicycle_pedestrian/index.cfm)
- Economic Development  
[https://www.fhwa.dot.gov/planning/economic\\_development/](https://www.fhwa.dot.gov/planning/economic_development/)
- Sustainable Transportation  
<https://www.fhwa.dot.gov/environment/sustainability/>
- Community Connections  
[https://www.fhwa.dot.gov/innovation/everydaycounts/edc\\_4/connections.cfm](https://www.fhwa.dot.gov/innovation/everydaycounts/edc_4/connections.cfm)
- Health in Transportation  
[https://www.fhwa.dot.gov/planning/health\\_in\\_transportation/](https://www.fhwa.dot.gov/planning/health_in_transportation/)